

ROLFKUHNGBH

member of svt group



“KERAFIX® Everseal”-Series

Individual profile seals for doors,
glazing, façades and safety cabinets



Profile Seals – the “KERAFIX® Everseal T” Series

The profile seals of the “KERAFIX® Everseal T” series are flexible fire protection seals with a graphite-based intumescent content of 0-100%. In case of fire, these develop into a foam body by foaming up to seal construction openings and prevent the spread of fire.

All “KERAFIX® Everseal T” profiles are individually manufactured on customer request.

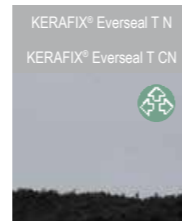
Areas of application for the “KERAFIX® Everseal” series

- Fire protection doors made of wood, steel and aluminium
- Glazing and façades
- Safety cabinets and safes
- Smoke protection doors

Basic Products

KERAFIX® Everseal T N and KERAFIX® Everseal T CN

- Fully foaming TPE-based variant for safety cabinets and safes
- Coextruded foaming TPE-based variant with a non-foaming component



Graphite-based variants with three quality levels:



The New Generation – “KERAFIX® Everseal NG” Series

The products and profile seals of the “KERAFIX® Everseal NG” series are graphite-based, fully foaming variants with quality levels of L (low), H (high) or P (power), e.g. KERAFIX® Everseal NG-N L, KERAFIX® Everseal NG-N H or KERAFIX® Everseal NG-N P, that develop into a pressure-tight foam body thus closing joints in case of fire. In addition, the profile seals are free of organic solvents and largely insensitive to moisture. The products from the “KERAFIX® Everseal NG-N” series granulate are high-quality technical plastics that are used as the starting material for injection moulded parts that expand in case of fire.

Basic Products



KERAFIX® Everseal NG-N

- Fully foaming graphite-based variant, available in L, H or P quality

KERAFIX® Everseal NG-CN

- Coextruded, graphite-based variant with non-foaming component (e.g. TPE-based) in L, H or P

The “KERAFIX® Everseal NG” series are distinguished by the following characteristics:

- 10 to 20 times foaming factor (450° C, 30 min., with load)
- Foaming pressure at least from 0.4 to 0.7 N/mm²
- Reaction starts from ca. 175° C
- Recommendation for EI 30 to EI 90 component constructions
- Classification E according to DIN EN 13501-1
- Largely insensitive to moisture

The N and CN Variants of the “KERAFIX® Everseal” Series

Extrusion enables us to manufacture fire protection profiles and seals for a wide range of applications and industries. We distinguish here between normal extrusion (N) and coextrusion (CN).

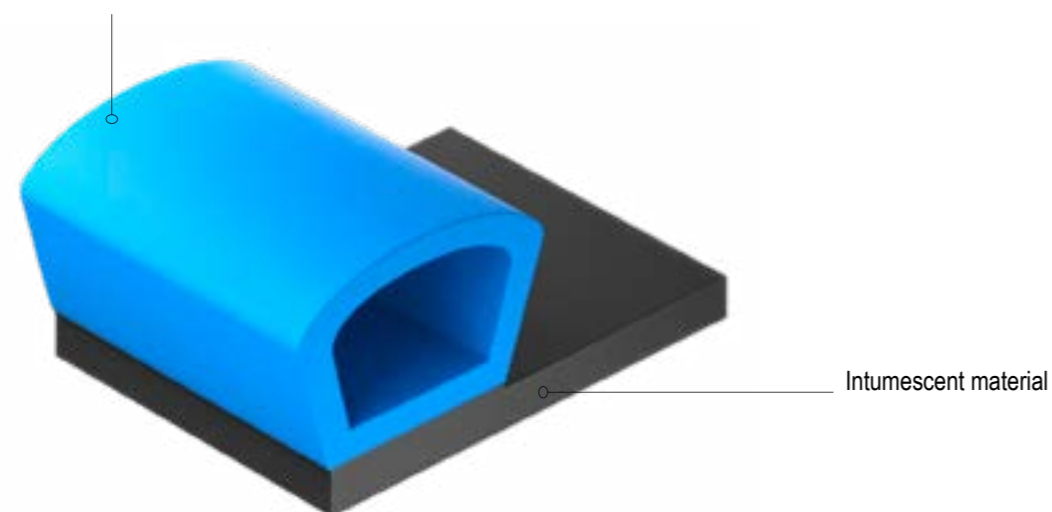
Normal extrusion (“KERAFIX® Everseal NG-N” series):

In this manufacturing process, our intumescent granules are heated in the extruder and formed into the desired shape with the help of a tool.

Coextrusion (“KERAFIX® Everseal NG-CN” series):

In this special manufacturing process, our intumescent granules and another material are heated in two extruders and then joined and brought into the desired shape with the help of a coextrusion tool. This creates a finished profile from two different materials.

Rubber-elastic material e.g. TPE-seal



Advantages of the fire protection profiles and seals of the “KERAFIX® Everseal NG-N” series:

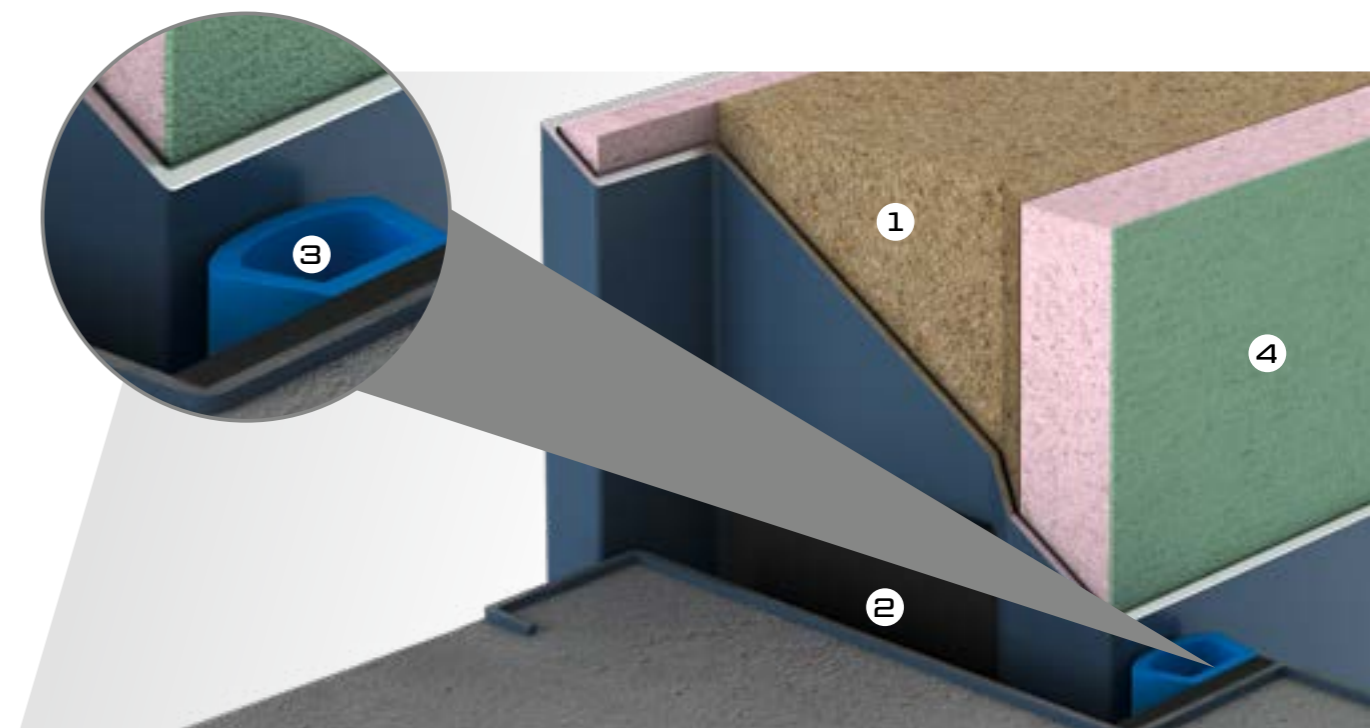
- Manufacturing in accordance with customer-specific requirements and wishes
- Laminating with various materials, such as with the SK (single-sided self-adhesive) variants, the DF (with hard PVC cover film) variants and others
- Fulfilment of the fire protection requirements of 30 to 90 minutes fire resistance
- Fixing to individual constructions and thus possible to dispense with the self-adhesive layer
- Available as rolls or strips in various material shore hardnesses

Coextrusion technology offers further advantages, such as:

- Combination of different material properties in a single product (e.g. the combination of an intumescent material with a rubber-elastic material)
- Increased productivity for the customer by reducing the variety of products
- Other product requirements such as fire protection, smoke protection, decor/visuals, etc. can also be fulfilled

Fire Door Installation Example

Our product combinations and solutions for almost any fire protection application encompass customised insulation materials for high temperature applications, fire protection boards, energy-absorbing products, mastics and sealants and materials that foam in case of fire.



- | | |
|--|---|
| 1. Fire protection boards as insulation material, e.g. ROKU® Therm | 3. Profile seal, e.g. KERAFIX® Everseal NG-CN |
| 2. Foaming material e.g. KERAFIX® Flexpan 200 NG-A | 4. Fire protection boards as cooling insulators, e.g. ROKU® V2 Gypsum Board |

Areas of Application for the “KERAFIX® Everseal” Series

Doors & Glazing

Fire protection systems for building services, door & glazing industry



Battery Applications

Fire protection with ever increasing requirements in a fast-growing market



Ships

Fire protection systems for the specific conditions of the shipping industry



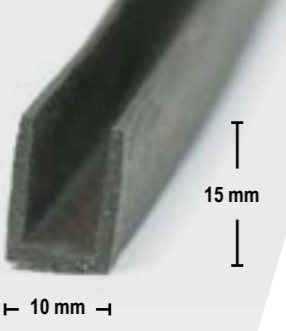
Rolling Stock

High-performance fire protection at any speed



Overview of Different Variants and Their Shapes


The "KERAFIX® Everseal" series impresses with the material variants and also with the individual possibilities and geometries that we offer with this series. From star seals to U-profiles to trapezoidal seals, everything is possible – and much more besides.



KERAFIX® Everseal NG-N L 1510

Illustration:

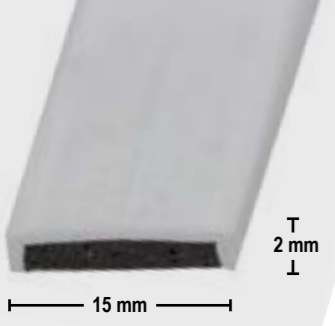
- U-profile seal
- NG-N L variant, graphite-based, fully foaming variant with L quality



KERAFIX® Everseal NG-N H Ø 4 mm

Illustration:

- Round cord seal
- NG-N H variant, graphite-based, fully foaming variant with H quality



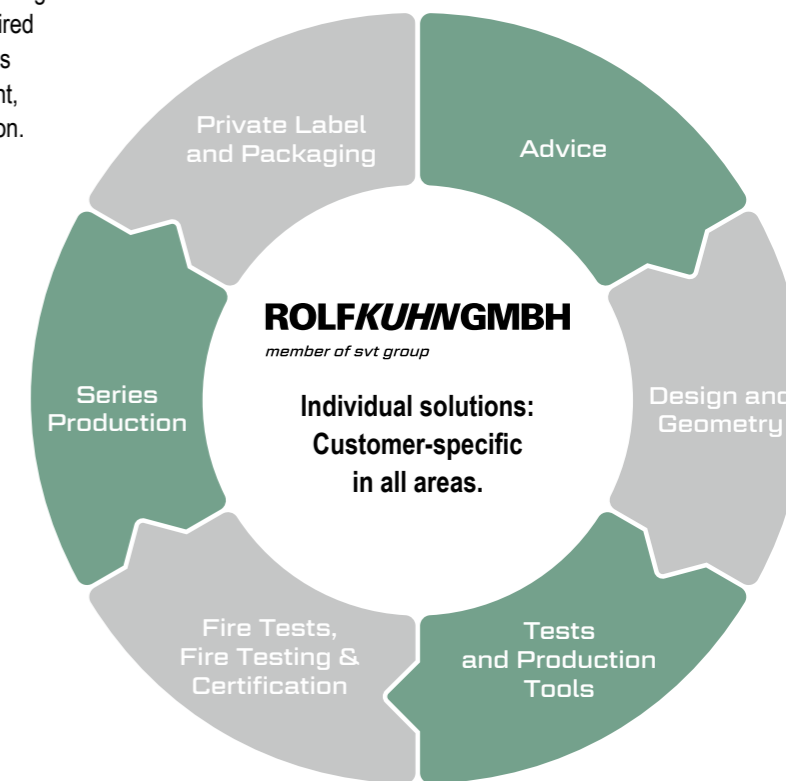
KERAFIX® Everseal NG-CN P 1502

Illustration:

- Strip seal
- NG-CN P variants, coextruded graphite-based variants with P quality and a non-foaming, TPE-based component

Suitable Solutions for Your Individual Application

Our state-of-the-art machinery is ideally set up for the production and manufacturing of individualised seals and profiles, allowing us to produce fire protection constructions in almost any required geometry. Regardless of whether it is a single part or series production – we find the right solution for every requirement, implement it technically and guarantee the correct execution. At the end of this fully integrated process chain is a customised result certified in accordance with DIN EN ISO 9001 and tested in accordance with the (applicable) fire protection standards. We will be happy to advise you!



Four Pillars – One Goal: Your Satisfaction

- ✓

Decades of expertise
Experienced and clever heads think ahead, always seeking innovation! Our customers benefit from our decades of expertise in many ways, because it is not only reflected in the ease of use and application of our high-quality fire protection materials, but also flows into the continuous new development and further development of innovative solutions "Made by Rolf Kuhn".
- ✓

All-round support
We can do more. As a manufacturing company that covers a demanding area of preventive industrial fire protection within the svt Group, we offer our customers not only intensive preventive support, but also the procurement of further services in the area of passive fire protection and restoration management.
- ✓

Made in Germany
We set high standards for ourselves – and for you too! We have always attached great importance to our own comprehensive solutions with a focus on quality, which is why we think only the best is good enough for you too. Our "Made in Germany" principle is your quality guarantee – also in terms of all relevant standards, laws and directives.
- ✓

Sustainability
Dealing responsibly with the resources of our Earth and our fellow human beings is something that is close to our hearts. That is why we consistently manufacture and process our materials in accordance with the latest findings on occupational health & safety, and environmental protection. This is how we act today for a sustainable tomorrow.

Rolf Kuhn GmbH

Jaegersgrund 10
57339 Erndtebrueck
Germany
T +49 2753 5945-0
E info@rolfkuhngmbh.com
W kuhn-brandschutz.com

Orders:

F +49 2753 5945-52
E order@svt.de

A Company of

svt Products GmbH
Gluesinger Strasse 86
21217 Seevetal
Germany
W svt-global.com