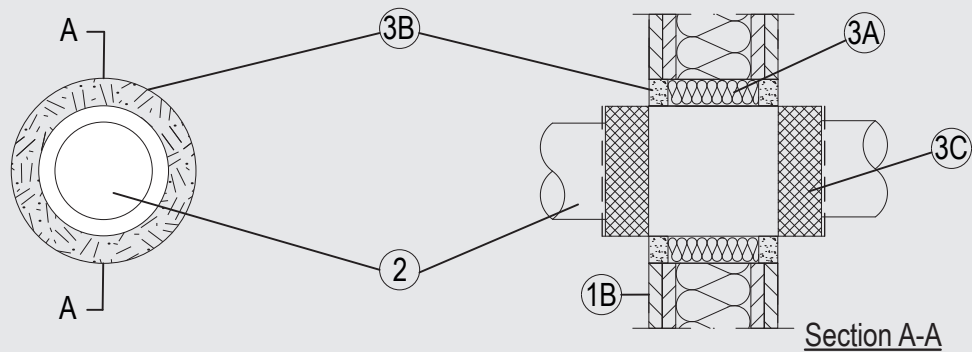


# Through-penetration Firestop Systems

## System No. W-L-1546

ANSI/UL1479 (ASTM E814)	CAN / ULC S115
F Rating — 2 Hr	F Rating – 2 Hr
T Rating — 1/2 Hr	FT Rating – 1/2 Hr
	FH Rating – 2 Hr
	FTH Rating – 1/2 Hr



### 1. Wall Assembly

The 1 or 2 hr fire rated gypsum board/stud wall assembly shall be constructed of the materials and in the manner described in the individual U400, V400 or W400 Series Wall and Partition Design in the UL Fire Resistance Directory and shall include the following construction features:

- A. Studs (not shown in diagram) — Steel studs to be min 2-3/4 in. (70 mm) wide spaced max 24 in. (610 mm) OC.
- B. Gypsum Board\* — The gypsum board type, thickness, number of layers, fastener type and sheet orientation shall be as specified in the individual Wall and Partition Design in the UL Fire Resistance Directory. Max size of opening to be 6-3/4 in. (170 mm) diameter.

### 2. Pipes/ Tubes

Single to be installed within the opening. The annular space between the PYRO-SAFE CT and the periphery of the opening to be 1 in (25 mm). Pipes to be rigidly supported on both sides of the wall assembly. The following penetrants may be used:

- A. Max 3-1/2 in. (89 mm) diameter Schedule 10 (or heavier) steel pipe for use in closed (process or supply) or vented (drain, waste or vent) piping systems.

### 3. Firestop System

The Firestop System shall consist of the following:

- A. Packing Material — Min. 9.3 pcf (150 kg/m<sup>3</sup>) mineral wool firmly packed into the opening of the wall as a permanent form. Packing material to be installed 1 in. space to both surfaces of wall.
- B. Fill, Void or Cavity Material\* — Min 1 in. depth on both sides of mineral wool.  
SVT BRANDSCHUTZ VERTRIEBSGESELLSCHAFT MBH INTERNATIONAL — PYRO-SAFE FLAMMOTECT A
- C. Firestop Device\* — 7-7/8 in. (200 mm) long pipe wrap positioned centrally within the seal and wrapped around the cables.  
SVT BRANDSCHUTZ VERTRIEBSGESELLSCHAFT MBH INTERNATIONAL — PYRO-SAFE CT

\*Indicates such products shall bear the UL or cUL Certification Mark for jurisdictions employing the UL or cUL Certification (such as Canada), respectively.

Please contact us for further information:

✉ Information: [global@svt.de](mailto:global@svt.de)    Order: [order@svt.de](mailto:order@svt.de)  
☎ +49 4105-40 90-0