

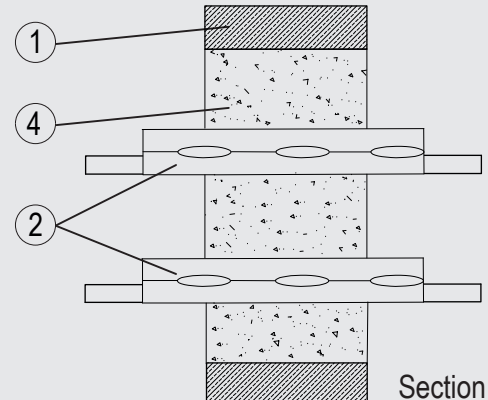
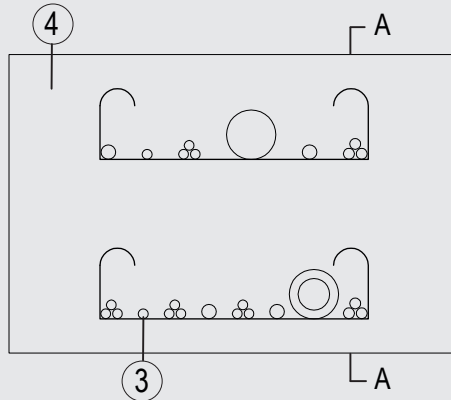
# Through-penetration Firestop Systems

## System No. W-J-408 1

### ANSI/UL1479 (ASTM E814)

### CAN / ULC S115

F Rating — 2 Hr	F Rating — 2 Hr
T Rating — 2 Hr	FT Rating — 2 Hr
	FH Rating — 2 Hr
	FTH Rating — 2 Hr



### 1. Wall Assembly

Min 4-1/2 in. (115 mm) thick lightweight or normal weight (100-150 pcf or 1600-2400 kg/m<sup>3</sup>) concrete. Wall may also be constructed of any UL Classified Concrete Blocks\*. Opening shall be rectangular with max dimensions of 23-1/2 in. (600 mm) by 15-3/4 in. (400 mm). See Concrete Blocks (CAZT) category in Fire Resistance Directory for names of manufacturers.

### 2. Cable Tray\*

Max two, nom 12 in. (300 mm) wide by max 2-3/8 in. (60 mm) deep open-perforated or solid sheet cable tray with side rails formed of min 0.05 in. (1.5 mm) thick steel. The cable trays to be spaced a nom 6-1/2 in. (165 mm) apart. The annular space between the cables trays and the periphery of the opening to be a min 2 in. (51 mm) to a max 6 in. (152 mm). Cable trays to be rigidly supported on both sides of the wall assembly.

### 3. Cables

Aggregate cross-sectional area of cables in cable tray not to exceed 25 percent of the cross-sectional area of the cable tray based on a max 2-3/4 in. (69 mm) cable loading depth within the tray. Cable bundles of different types shall be separated by min. 1 in. (25 mm). Any combination of the following types and sizes of cables may be used:

- A. Max 4/C 185 mm diam (or smaller), copper conductor cable with rubber (EPR) insulation and polyolefin (PO) jacket.
- B. Max 5/C No. 15 AWG (1.5 mm) diam (or smaller), copper conductor cable with EPR insulation and Rubber jacket.
- C. Max 5/C No. 15 AWG (1.5 mm) diam (or smaller), copper conductor cable with XPLE insulation and EVA jacket.
- D. Max 20/C No. 19 AWG (0.6 mm) diam (or smaller), copper conductor telecommunication cables PE jacket.
- E. Max 5/C No. 15 AWG (1.5 mm) diam (or smaller), copper conductor cable with PVC insulation and PVC jacket.
- F. Max 1/C 800 mm diam (or smaller), aluminium conductor cable with PE insulation and jacket.

### 4. Fill, Void or Cavity Material\*

Min 4-1/2 in. (115 mm) cast into the annular space between the cables, cable tray and periphery of the opening, flush with both surfaces of wall. Mortar to be mixed with water in accordance with the manufacturer's installation instructions.

SVT BRANDSCHUTZ VERTRIEBSGESELLSCHAFT MBH INTERNATIONAL — PYRO-SAFE NOVASIT BM

\*Indicates such products shall bear the UL or cUL Certification Mark for jurisdictions employing the UL or cUL Certification (such as Canada), respectively.

Please contact us for further information:

Information: [global@svt.de](mailto:global@svt.de) Order: [order@svt.de](mailto:order@svt.de)  
+49 4105-40 90-0