

## Through-penetration Firestop Systems

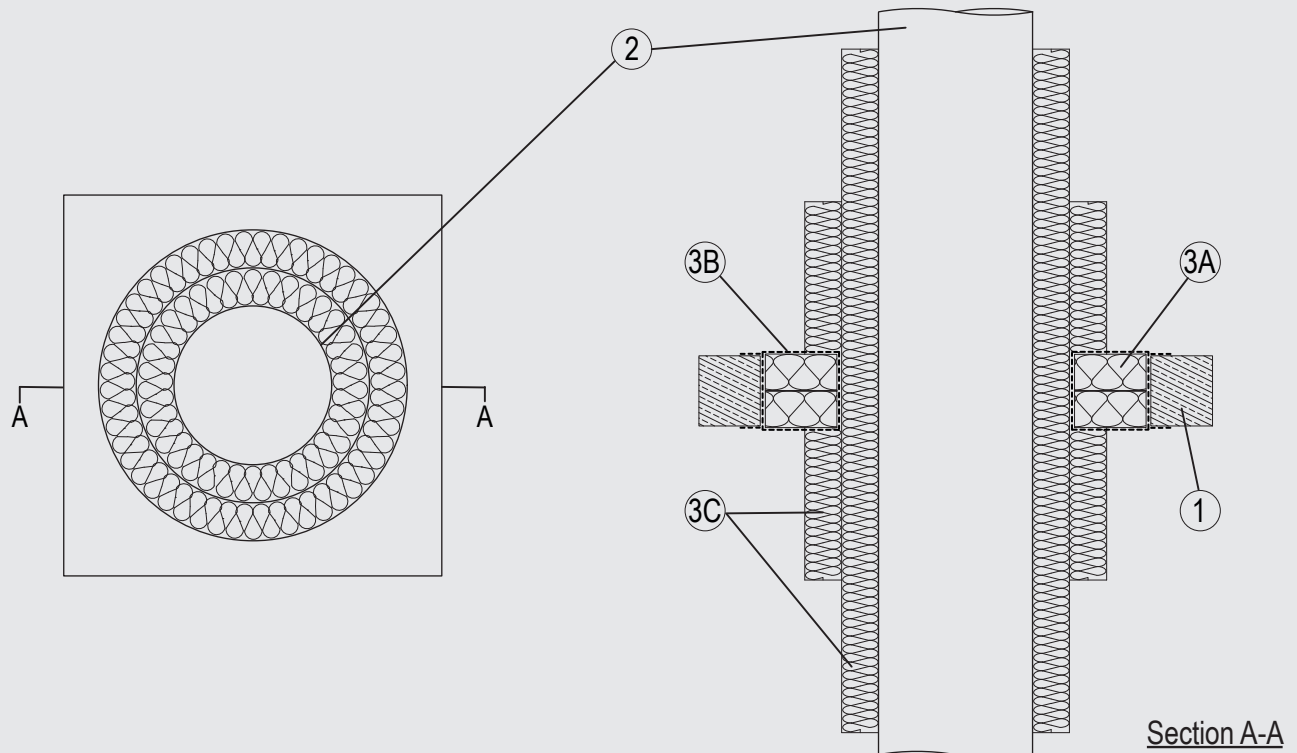
### System No. F-A-5064

#### ANSI/UL1479 (ASTM E814)

F Rating — 3 Hr  
T Rating — 3 Hr

#### CAN / ULC S115

F Rating — 3 Hr  
FT Rating — 3 Hr  
FH Rating — 3 Hr  
FTH Rating — 3 Hr



#### 1. Floor Assembly

Lightweight or normal weight (100-150 pcf or 1600-2400 kg/m<sup>3</sup>) concrete, min thickness of floor assembly is 4-1/2 in. (115 mm). Opening shall be circular or rectangular with max diam or dimensions 11-3/4 in. (300 mm).

#### 2. Pipes

Single pipe to be installed within the opening. The annular space between the pipe and the periphery of the opening to be a nom 2-1/8 in (58 mm). Pipe to be rigidly supported on both sides of the floor assembly. The following pipes may be used:

- A. Nom 5 in. (125 mm) diam (or smaller) Schedule 10 (or heavier) steel pipe.

#### 3. Firestop System

The Firestop System shall consist of the following:

- A. Packing material — 2 layers of nom 2-3/8 in. (60 mm) thick mineral wool board min 9.3 pcf (150 kg/m<sup>3</sup>) firmly packed into the opening of the floor as a permanent form.
- B. Fill, Void or Cavity Material\* — Min 1/16 in. (2 mm) dry film thickness to be applied inside the aperture before installation and over the full surface of the mineral wool boards, and overlapping onto the floor by min 3/4 in. (20 mm).  
SVT BRANDSCHUTZ VERTRIEBSGESELLSCHAFT MBH INTERNATIONAL — PYRO-SAFE FLAMMOTECT A
- C. Pipe Insulation — Nom 1-1/4 in. (30 mm) thick mineral fibre lamella mat, min density 2.5 pcf (40 kg/m<sup>3</sup>), wrapped around pipe for min 19-3/4 in. (500 mm) on both faces and continuous through the seal. Nom 1-1/4 in. (30 mm) thick mineral fibre lamella mat, min density 2.5 pcf (40 kg/m<sup>3</sup>), wrapped around first layer of pipe insulation for min 10 in. (250 mm) on both faces.

\*Indicates such products shall bear the UL or cUL Certification Mark for jurisdictions employing the UL or cUL Certification (such as Canada), respectively.

Please contact us for further information:

Information: [global@svt.de](mailto:global@svt.de) Order: [order@svt.de](mailto:order@svt.de)  
+49 4105-40 90-0