

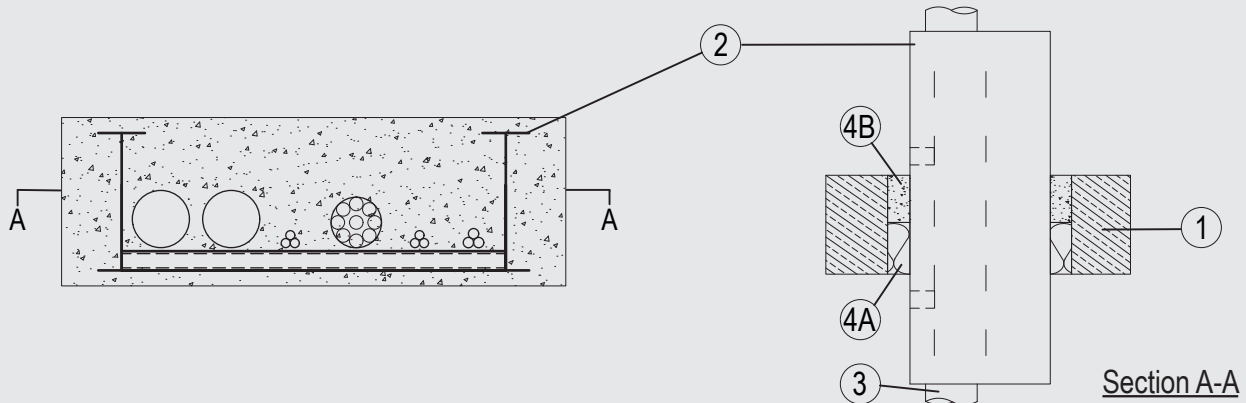
Through-penetration Firestop Systems

System No. F-A-4017

ANSI/UL1479 (ASTM E814)

CAN / ULC S115

F Rating — 3 Hr	F Rating – 3 Hr
T Rating — 1 Hr	FT Rating – 1 Hr
	FH Rating – 3 Hr
	FTH Rating – 1 Hr



1. Floor Assembly

Min 4-1/2 in. (115 mm) thick lightweight or normal weight (100-150 pcf or 1600-2400 kg/m³) concrete. Opening shall be rectangular with max dimensions of 23-1/2 in. (600 mm) by 7-7/8 in. (200 mm).

2. Cable Tray*

Nom 19-5/8 in. (500 mm) wide by max 6-3/8 in. (163 mm) deep open-perforated or solid sheet cable tray with side rails formed of min 1/8 in. (2.3 mm) thick aluminium. The annular space between the cables trays and the periphery of the opening to be a min 3/4 in. (18 mm) to a max 2 in. (50 mm). Cable trays to be rigidly supported on both sides of the floor assembly.

3. Cables

Aggregate cross-sectional area of cables in cable tray not to exceed 13 percent of the cross-sectional area of the cable tray based on a max 2-3/4 in. (68 mm) cable loading depth within the tray. Cable bundles of different types shall be separated by min 1 in. (25 mm). Any combination of the following types and sizes of cables may be used:

- A. Max 3/C 185 mm diam (or smaller), copper conductor cable with PVC insulation and PVC jacket.
- B. Max 5/C No. 15 AWG (1.5 mm) diam (or smaller), copper conductor cable with EPR insulation and Rubber jacket.
- C. Max 5/C No. 15 AWG (1.5 mm) diam (or smaller), copper conductor cable with XPLE insulation and EVA jacket.
- D. Max 20/C No. 19 AWG (0.6 mm) diam (or smaller), copper conductor telecommunication cables PE jacket.
- E. Max 5/C No. 15 AWG (1.5 mm) diam (or smaller), copper conductor cable with PVC insulation and PVC jacket.

4. Fill, Void or Cavity Material*

The Firestop System shall consist of the following:

- A. Packing Material — 1 layers of nom 2-3/8 in. (60 mm) thick mineral wool board min 9.3 pcf (150 kg/m³) firmly packed into the opening of the floor as a permanent form, flush to the bottom surface of the floor.
- B. Fill, Void or Cavity Material* — Min 2-1/8 in. (55 mm) cast into the annular space between the cables/tray and periphery of the opening, flush with the top surface of the floor. Mortar to be mixed with water in accordance with the manufacturer's installation instructions.
SVT BRANDSCHUTZ VERTRIEBSGESELLSCHAFT MBH INTERNATIONAL — PYRO-SAFE GFM

*Indicates such products shall bear the UL or cUL Certification Mark for jurisdictions employing the UL or cUL Certification (such as Canada), respectively.

Please contact us for further information:

Information: global@svt.de Order: order@svt.de
+49 4105-40 90-0