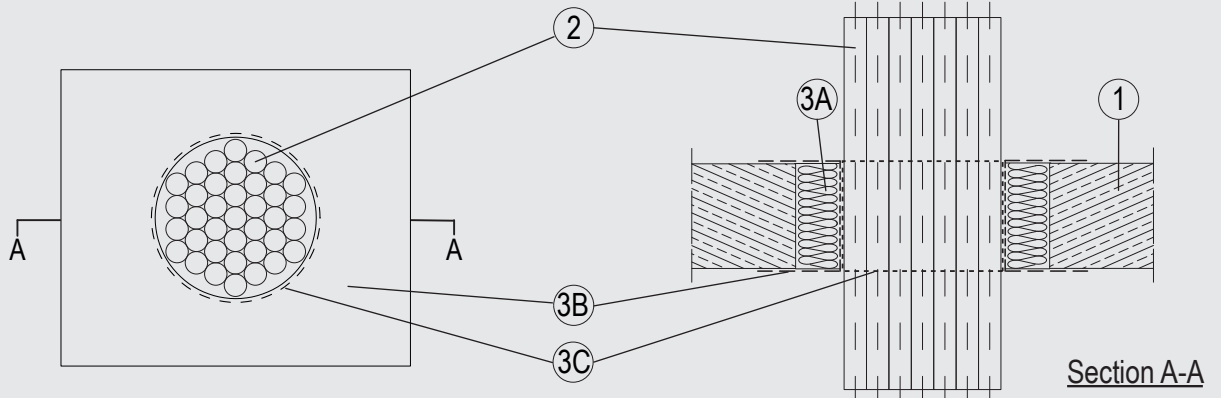


# Through-penetration Firestop Systems

## System No. F-A-3076

ANSI/UL1479 (ASTM E814)	CAN / ULC S115
F Rating — 3 Hr	F Rating – 3 Hr
T Rating — 1-1/2 Hr	FT Rating – 1-1/2 Hr
	FH Rating – 3 Hr
	FTH Rating – 1-1/2 Hr



System tested with a pressure differential of 2.5 Pa between the exposed and the unexposed surfaces with the higher pressure on the exposed side.

### 1. Floor Assembly

Min. 4-1/2 in. (115 mm) thick lightweight or normal weight (100-150 pcf or 1600 - 2400 kg/m<sup>3</sup>) concrete. Max size of opening to be 12 in. (300 mm) high by 12 in. (300 mm) wide.

### 2. Cables

Bundle of 6" (150 mm) diameter of the following types and sizes of cables may be used:

- A. Max 20/C No. 19 AWG (0.6 mm) diam (or smaller), copper conductor telecommunication cables PE jacket.

### 3. Firestop System

The Firestop System shall consist of the following:

- A. Packing material — Nom. 2-3/8 in. (60 mm) thick mineral wool boards min. 3.7 pcf (60 kg/m<sup>3</sup>) firmly packed into the opening of the wall as a permanent form. Packing material to be installed flush with both surfaces of wall.
- B. Fill, Void or Cavity Material\* — Min. 1/8 in. (4 mm) dry film thickness to be applied, coating the inside surface of the opening before installation of the packing material and over the full surface of the mineral wool boards, and overlapping onto the wall by min. 3/4 in. (20 mm).  
SVT BRANDSCHUTZ VERTRIEBSGESELLSCHAFT MBH INTERNATIONAL — PYRO-SAFE FLAMMOTECT-A
- C. Fill, Void or Cavity Material\* — 1 length of 1 layer of 1/16 in (1.5 mm) by 2 in. (50 mm) wrap flush mounted on the exposed side around the cable bundle.  
SVT BRANDSCHUTZ VERTRIEBSGESELLSCHAFT MBH INTERNATIONAL — PYRO-SAFE DG-CR BS

\*Indicates such products shall bear the UL or cUL Certification Mark for jurisdictions employing the UL or cUL Certification (such as Canada), respectively.

**Please contact us for further information:**  
 Information: [global@svt.de](mailto:global@svt.de)    Order: [order@svt.de](mailto:order@svt.de)  
 +49 4105-40 90-0