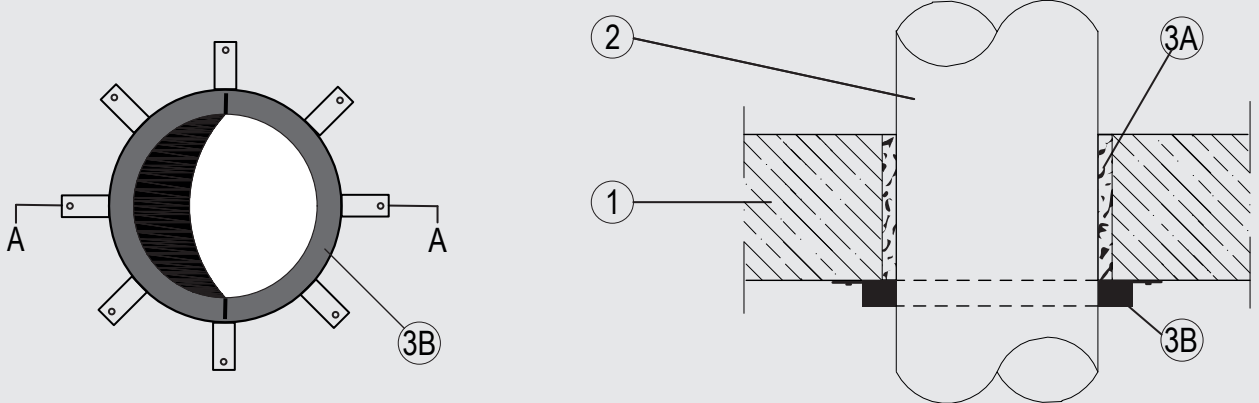


# Through-penetration Firestop Systems

## System No. F-A-2369

| ANSI/UL1479 (ASTM E814) | CAN / ULC S115    |
|-------------------------|-------------------|
| F Rating — 3 Hr         | F Rating – 3 Hr   |
| T Rating — 3 Hr         | FT Rating – 3 Hr  |
|                         | FH Rating – 3 Hr  |
|                         | FTH Rating – 3 Hr |



System tested with a pressure differential of 2.5 Pa between the exposed and the unexposed surfaces with the higher pressure on the exposed side.

### 1. Floor Assembly

Min. 4-1/2 in. (115 mm) thick lightweight or normal weight (100-150 pcf or 1600 - 2400 kg/m<sup>3</sup>) concrete. Opening shall be circular or rectangular with max diameter or dimensions of 10 in. (250 mm).

### 2. Pipes/ Tubes

Single to be installed within the opening. The annular space between the pipes and the periphery of the opening to be 0.6in (15 mm). Pipes to be rigidly supported on both sides of the floor assembly. The following penetrants may be used:

- A. Nom 8.6 in (220 mm) diam 0.26 in (6.6 mm) wall thickness PVC pipe for use in closed (process or supply) piping systems.

### 3. Firestop System

The Firestop System shall consist of the following:

- A. Fill, Void or Cavity Material\* — Min 0.6 in (15 mm) wide inside the aperture.  
svt BRANDSCHUTZ VERTRIEBSGESELLSCHAFT MBH INTERNATIONAL — PYRO-SAFE GFM
- B. Firestop Device\*— Galv steel collar lined with an intumescent material sized to fit the specific diam of the through-penetrant. Device shall be installed around through-penetrant in accordance with the accompanying installation instructions on the exposed side.  
svt BRANDSCHUTZ VERTRIEBSGESELLSCHAFT MBH INTERNATIONAL — ROKU AWM II

\*Indicates such products shall bear the UL or cUL Certification Mark for jurisdictions employing the UL or cUL Certification (such as Canada), respectively.

**Please contact us for further information:**

✉ Information: [global@svt.de](mailto:global@svt.de)    Order: [order@svt.de](mailto:order@svt.de)

☎ +49 4105-40 90-0