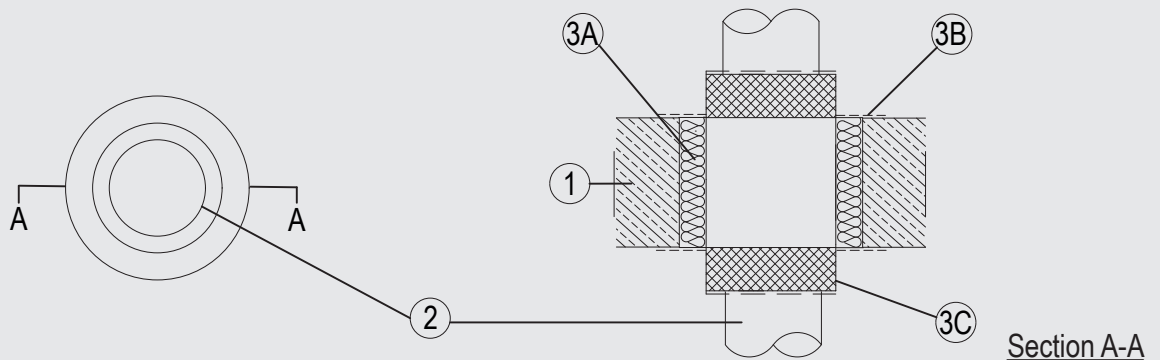


# Through-penetration Firestop Systems

## System No. C-AJ-1680

ANSI/UL1479 (ASTM E814)	CAN / ULC S115
F Rating — 3 Hr	F Rating – 3 Hr
T Rating — 1/2 Hr	FT Rating – 1/2 Hr
	FH Rating – 3 Hr
	FTH Rating – 1/2 Hr



### 1. Wall and Floor Assembly

Min. 4-1/2 in. (115 mm) thick lightweight or normal weight (100-150 pcf or 1600 - 2400 kg/m<sup>3</sup>) concrete. Wall may also be constructed of any UL Classified Concrete Blocks\*. Opening shall be circular with max diameter of 6-3/8 in. (162 mm). See Concrete Blocks (CAZT) in the Fire Resistance Directory for names of manufacturers.

### 2. Pipes/ Tubes

Single to be installed within the opening. The annular space between the PYRO-SAFE CT and the periphery of the opening to be 1 in (25 mm). Pipes to be rigidly supported on both sides of the floor or wall assembly. The following penetrants may be used:

- A. Max 3-1/2 in. (89 mm) diameter Schedule 10 (or heavier) steel pipe for use in closed (process or supply) or vented (drain, waste or vent) piping systems.

### 3. Firestop System

The Firestop System shall consist of the following:

- A. Packing material — 2 layers nom. 2-3/8 in. (60 mm) thick mineral wool board min. 9.3 pcf (150 kg/m<sup>3</sup>) firmly packed into the opening of the floor or wall as a permanent form.
- B. Fill, Void or Cavity Material\* — Min. 1/16 in. (2 mm) dry film thickness to be applied inside the aperture before installation and over the full surface of the mineral wool boards, and overlapping onto the wall by min. 3/4 in. (20 mm).  
 SVT BRANDSCHUTZ VERTRIEBSGESELLSCHAFT MBH INTERNATIONAL — PYRO-SAFE FLAMMOTECT A
- C. Firestop Device\* — 7-7/8 in. (200 mm) long pipe wrap positioned centrally within the seal and wrapped around the pipe.  
 SVT BRANDSCHUTZ VERTRIEBSGESELLSCHAFT MBH INTERNATIONAL — PYRO-SAFE CT

\*Indicates such products shall bear the UL or cUL Certification Mark for jurisdictions employing the UL or cUL Certification (such as Canada), respectively.

**Please contact us for further information:**  
 Information: [global@svt.de](mailto:global@svt.de)    Order: [order@svt.de](mailto:order@svt.de)  
 +49 4105-40 90-0