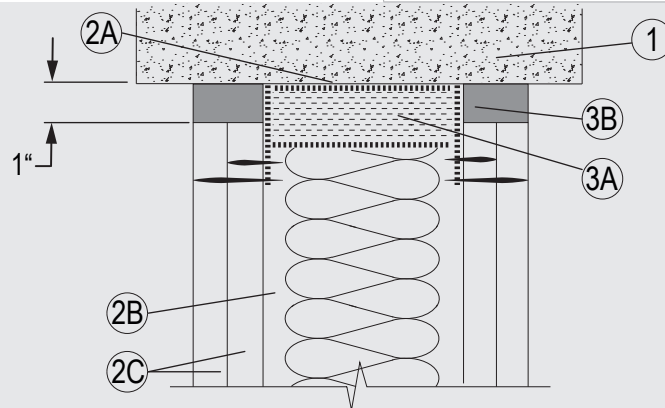


# Through-penetration Firestop Systems

## System No. HW-S-O 144

**ANSI/UL1479 (ASTM E814)**
**CAN / ULC S115**

Assembly Rating — 2 Hr	F Rating — 2 Hr
Joint Width — 1 In. (25 mm) Max	FT Rating — 2 Hr
	FH Rating — 2 Hr
	FTH Rating — 2 Hr
	Joint Width — 1 In. (25 mm)



### 1. Floor or Wall Assembly

Min 4-1/2 in. (114 mm) thickness of reinforced lightweight or normal weight (100-150 pcf or 1600-2400 kg/m<sup>3</sup>) structural concrete. Floor may also be constructed of any 4.5 in. (114 mm) thick UL Classified hollow-core Precast Concrete Units\*.

See Precast Concrete Units (CFTV) category in the Fire Resistance Directory for names of manufacturers.

### 2. Wall Assembly

The 1 or 2 h fire-rated gypsum board/ stud wall assembly shall be constructed of the materials and in the manner describes in the individual U400, V400 or W400 Series Wall or Partition Design in the UL Fire Resistance Directory and shall include the following construction features:

- Steel Floor Runner and relief runner — Floor runners of wall assembly shall consist of min No. 25 gauge galv steel channels sized to accommodate steel studs (Item 2B). Floor runners to be provided with min 2-2/5 in. (60 mm) flanges. Runners secured with steel fasteners spaced 12 in. (305 mm) OC. Relief runners shall consist of min No. 25 gauge galv steel channels sized to accommodate steel studs (Item 2B). Relief runners to be provided with min 1-1/2 in. (40 mm) flanges.
- Studs — Steel studs to be min 2-3/4 in. (70 mm) wide spaced max 24 in. (610 mm) OC.
- Gypsum Board\* — Gypsum board installed to a min total thickness of 1 in. (25 mm) on each side of wall. Wall to be constructed as specified in the individual U400 or V400 Series Design in the UL Fire Resistance Directory, except that a max 1 in. (25 mm) gap shall be maintained between the top of gypsum board and bottom of concrete floor.  
The hourly ratings of the joint system are equal to the hourly fire rating of the wall.

### 3. Joint System

Max separation between top of wall and bottom of floor is 1 in. (25 mm). The joint system shall consist of the following:

- Packing Material — Min 1-1/2 in. (40 mm) thickness of min 3.1 pcf (50 kg/m<sup>3</sup>) mineral wool batt insulation firmly packed into the cavity formed in the top runner, as a permanent form.
- Fill, Void or Cavity Material\* — Sealant — Min 1 in. (25 mm) thickness of fill material, installed on each side of the wall between the top of the wall and the bottom of the concrete floor, flush with each surface of the wall.  
SVT BRANDSCHUTZ VERTRIEBSGESELLSCHAFT MBH INTERNATIONAL — PYRO-SAFE FLAMMOTECT-A

\*Indicates such products shall bear the UL or cUL Certification Mark for jurisdictions employing the UL or cUL Certification (such as Canada), respectively.

Please contact us for further information:

Information: [global@svt.de](mailto:global@svt.de) Order: [order@svt.de](mailto:order@svt.de)  
+49 4105-40 90-0